

# TrueGrain Series™

WEST COAST GREY



Enhance your project with  
the look of *real wood* without  
the maintenance.

**TrueGrain Series™ by Fisher Coating** utilizes an advanced pre-finishing system on James Hardie Fibre Cement products to achieve depth and contrast that will make your project unique and beautiful, with the durability of cementitious siding.

## PROGRAM COLOURS

See our website for special order colours

\*Suggested Colour Match Caulking



Cedartone

\*AdSeal 1940 Hybrid #194-57  
\*Quad Max #224 - 2149694



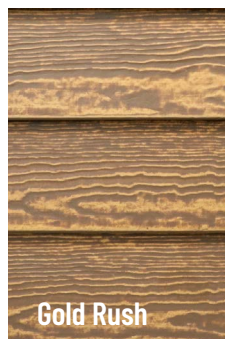
Chris Craft

\*AdSeal 1940 Hybrid #194-32  
\*Quad Max #288 - 1869836



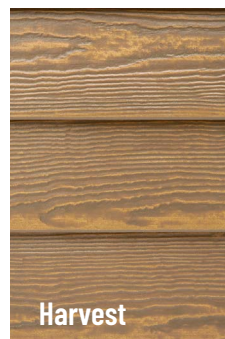
Sepia

\*AdSeal 1940 Hybrid #194-20  
\*Quad Max #288 - 1869836



Gold Rush

\*AdSeal 1940 Hybrid #194-23  
\*Quad Max #245 - 2149692



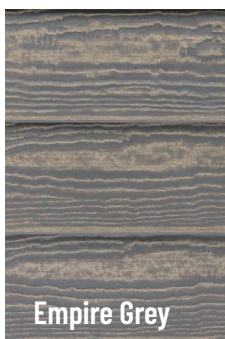
Harvest

\*AdSeal 1940 Hybrid #194-17  
\*Quad Max #221 - 2149696



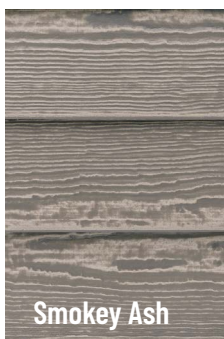
West Coast Grey

\*AdSeal 1940 Hybrid #194-37  
\*Quad Max #219 - 1869823



Empire Grey

\*AdSeal 1940 Hybrid #194-22  
\*Quad Max #219 - 1869823



Smokey Ash

\*AdSeal 1940 Hybrid #194-17  
\*Quad Max #219 - 1869823



Weathered Wood

\*AdSeal 1940 Hybrid #194-88  
\*Quad Max #513 - 1869870



Shou Sugi Ban

\*AdSeal 1940 Hybrid #194-33  
\*Quad Max #009 - 1989549

## Sample Box

Fisher understands the importance of holding the product in hand before selecting your material, ensuring it arrives in the exact colour and finish you envisioned.

Order today at  
[fishercoating.com/samples](http://fishercoating.com/samples)



### Custom Colour Application

Are you interested in applying a custom colour match to TrueGrain™? We can help you achieve the perfect look for your unique project needs.



### Sample Box

Do you like what you have read about TrueGrain Series™ and want to view the product in person? We offer samples shipped to your location.



# Why choose TrueGrain™?

TrueGrain™ is designed to represent the best features of professionally finished natural wood siding. Like natural wood siding, TrueGrain's beauty lies in the variety of substrate grain patterns, enhanced by the two-tone colour combination, which is achieved through Fisher's proprietary stain application process.

- The two-tone stained wood-look provides depth and contrast to beautify any project
- Over 10 program colours to choose from
- Durability and fire resistance of fibre cement siding
- Factory applied using Fisher's advanced, automated pre-coating system
- Backed by an industry leading warranty



## SPECIFICATIONS

### SUBSTRATE

James Hardie Fibre Cement

### PRODUCTS

- HardiePlank® Lap Siding
- HardieShingle® Siding
- HardiePanel® Vertical Siding
- HardieTrim® Rustic Grain
- HardieSoffit® Panels

### SUITABLE FOR

Single Family | Multi-Family | Commercial

### WARRANTY

- Fisher 15 year warranty on coating
- James Hardie 30 year warranty on substrate

### VALUE ADDED

- Touch-up Kits Available
- Colour Match Caulking Suggestions



## BENEFITS



The beauty of real wood, without the maintenance



Fire resistant, non-combustible fibre cement substrate



Moisture and humidity resistant to prevent swelling



Engineered for Climate preventing expansion and contraction



Ideal pest-resistant alternative to wood

### SINGLE FAMILY



### MULTI-FAMILY TOWNHOMES



### MULTI-FAMILY APARTMENTS



### COMMERCIAL



## HOW TO ORDER

1

Visit [fishercoating.com](https://fishercoating.com) to view the TrueGrain Series™

2

Select a TrueGrain Series™ colour

3

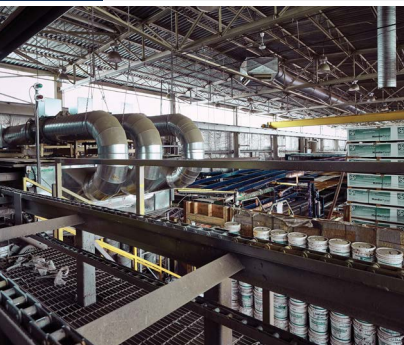
Choose your preferred Hardie® product

4

Speak with your builder or James Hardie dealer to order

5

TrueGrain Series™ arrives on site ready to install



## ABOUT FISHER

Fisher is a pre-stain manufacturing facility based in British Columbia specializing in semi transparent coatings on both wood and fibre cement.

Originally established in 1998 as a painting contractor, Fisher opened the doors of the first pre-stain factory in 2008. Fisher currently operates in an automated manufacturing facility coating building materials for a wide range of projects and customers throughout North America.

## FISHER

- 📞 604.628.0272
- 🌐 [FISHERCOATING.COM](https://fishercoating.com)
- 📍 39100 GOVERNMENT ROAD SQUAMISH, BC
- ✉️ BOX 2340 GARIBALDI HIGHLANDS, BC V0N 1T0

060225